

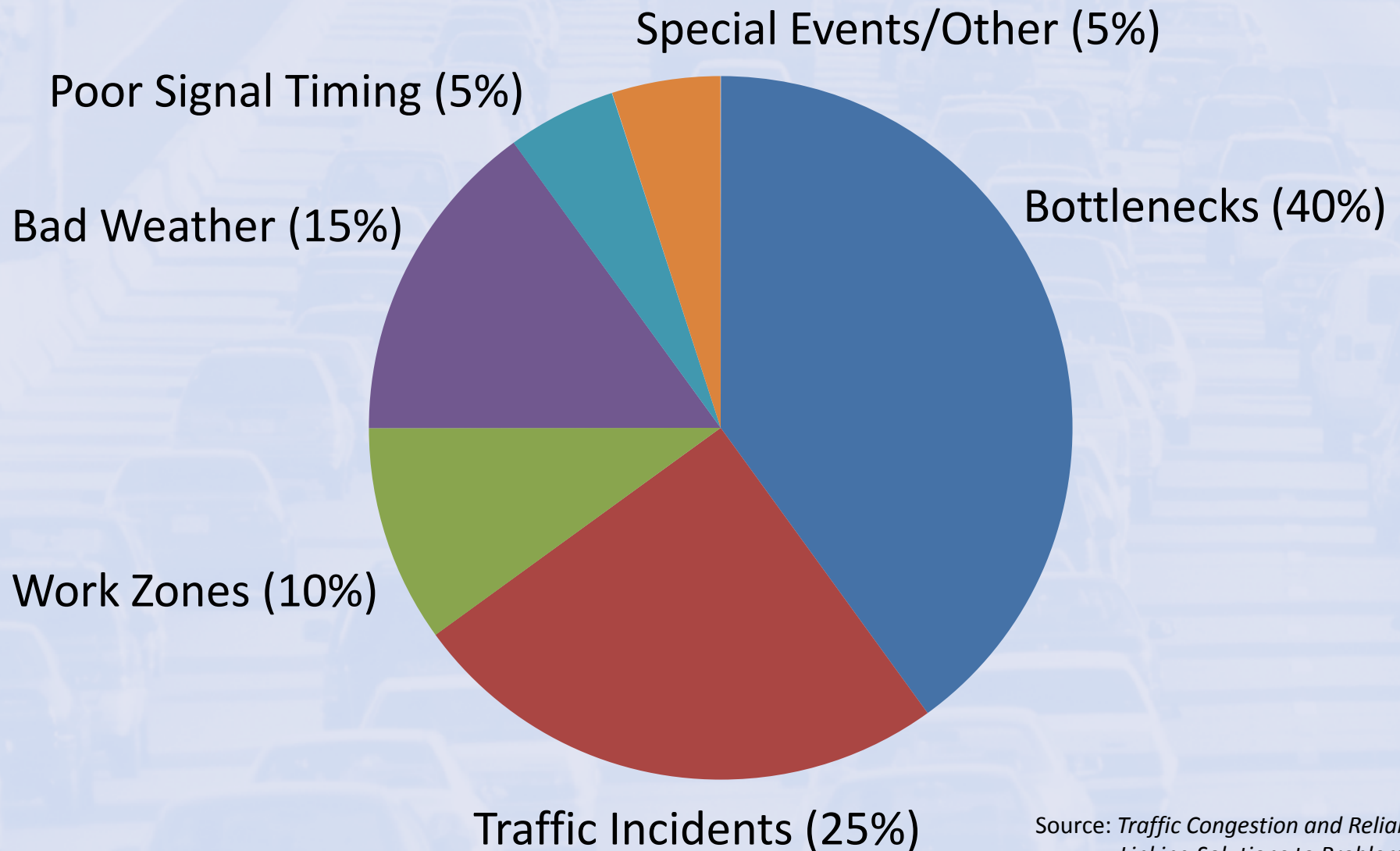
WisDOT Traffic Operations Program

Wisconsin Department of Transportation



- *Bureau of Traffic Operations*
- *Statewide Traffic Operations Center*

Presented By: Anne Reshadi, PE



Source: *Traffic Congestion and Reliability: Linking Solutions to Problems*

- In 2011, a study conducted by AAA found that:
 - Annual cost of congestion: \$97.1 billion
 - » Milwaukee: \$570 million \Rightarrow \$384 per person
 - Annual cost of traffic crashes: \$299.5 billion
 - » Milwaukee: \$2.1 billion \Rightarrow \$1,357 per person





Mission: Reliable, predictable and safe movement of people and freight across the statewide and Great Lakes regional highway network

Program Components

- Transportation Emergency Response
- Traffic Management and Traveler Warning
 - Intelligent Transportation Systems (ITS)
- Traffic Incident Management
- Work Zone Management
- Freight Operations Support
- Traffic Safety Engineering
- Traffic Control Devices
- Transportation Operations R&D
- Multistate Partnerships

Components:

- Statewide Traffic Operations Center (STOC) Control Room
- Traffic management field devices
- ITSNet



Traffic Operations Infrastructure Plan (TOIP)

- Tool to strategically evaluate potential operational improvements from technology applications, improved communications, and ITS in a manner similar to traditional highway improvement projects



Surveillance

- Closed-Circuit Television (CCTV) Cameras
- Roadway Detectors & Congestion Maps
- Public Safety Computer-Aided Dispatch (CAD)
- Road Weather Information Systems



Traffic Flow Management

- Ramp Control: Meters and Gates
- Traffic Signal Systems



Traveler Information

- 511 – Phone, Website and Twitter
- Dynamic Message Signs (DMS)
- Portable Changeable Message Signs (PCMS)
- Highway Advisory Radio (HAR)
- Traffic Incident Alerts (TIAs)
 - Distributed to law enforcement, the media and the trucking industry
- Traffic Media Partnerships

Operational Partner Support

- Communication with response partners and neighboring states
- Statewide Incident Notification Process (SINP)



Purpose: Provide law enforcement agencies and highway departments a mechanism for reporting transportation infrastructure problems and traffic incidents that occur on state-owned highways

Benefits

- Statewide consistent procedure and service available 24/7
- Provides a single number for contacting WisDOT
- Improved service to local transportation stakeholders
- Increased ability to track incidents and corresponding resource needs statewide

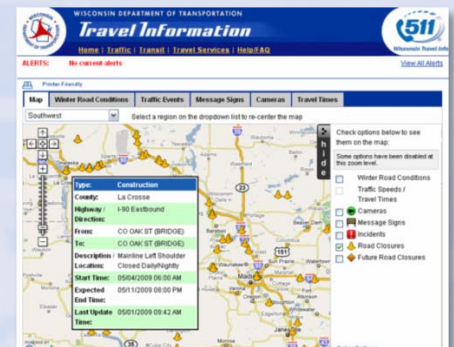


Planning

- Federal Work Zone Safety and Mobility Rule
- Transportation Management Plan
 - Incident Management Plan
 - Structured state-local collaboration

Operations

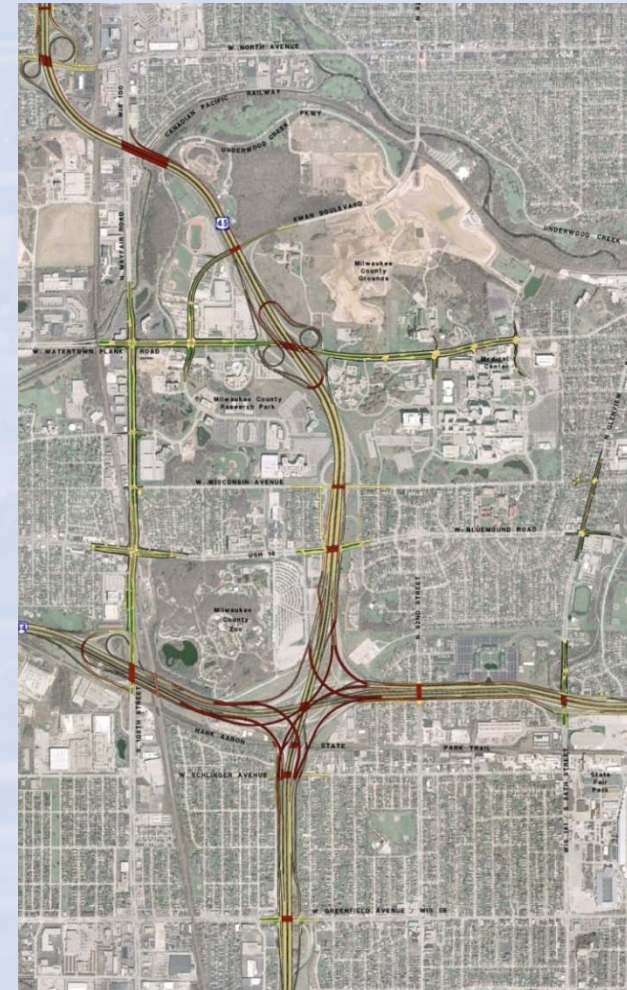
- Lane Closure System (LCS)
- Freeway Service Team
- Law Enforcement Mitigation Contracts
- Alternate Routes
- Commuter Options/Transit Services
- Public Information



Integrated Corridor Management (ICM)

Zoo Interchange ICM Vision Statement

- WisDOT and partner agencies will operate the Zoo Interchange transportation corridors in an integrated manner to maximize utilization of roadway capacity on key freeway and arterial routes during reconstruction and thereafter
- Timely, accurate and useful information will be readily accessible to travelers to support travel decisions and allow for safer travel to destinations in a reasonable and predictable amount of time
- Data and information sharing among all agencies responsible for operations will improve efficiency and management of traffic incidents



Integrated Corridor Management (ICS)

Zoo Interchange ICM Strategies

- Zoo Corridors Traffic Operations Authority
- Real time information sharing
- Freeway - arterial integrated operations
- Traffic incident management expansion
- Integration with Milwaukee County EMS

DATA SOURCES



Closed-Circuit
TV Cameras



Roadway
Detectors



Public Safety
Contacts



Computer-Aided
Dispatch



Road Weather
Conditions



Lane Closure
System

ITSNet
COMMUNICATION

STATEWIDE TRAFFIC OPERATIONS CENTER

TRAFFIC MANAGEMENT AND TRAVELER INFORMATION/WARNING



511
Phone System



511
Website



511
Twitter



Dynamic
Message Signs



Portable
Changeable
Message Signs



Highway
Advisory
Radio



Other Traffic
Management/
Communication
Centers



Public Safety
Partners



News
Media



Ramp
Meters

Thank You

For More Information:

Anne Reshadi, PE
System Operations and Electrical
Engineering Section Chief

Wisconsin Department of Transportation
Statewide Traffic Operations Center
433 West St. Paul Ave
Milwaukee, WI 53203

Anne.Reshadi@dot.wi.gov