

Because Nothing Beats Getting to Where You Want to Go

What makes up the
PRICE
at the pump

State & Federal Taxes **14 %***

All Other **86 %**

includes:

Refining

Distribution & Marketing

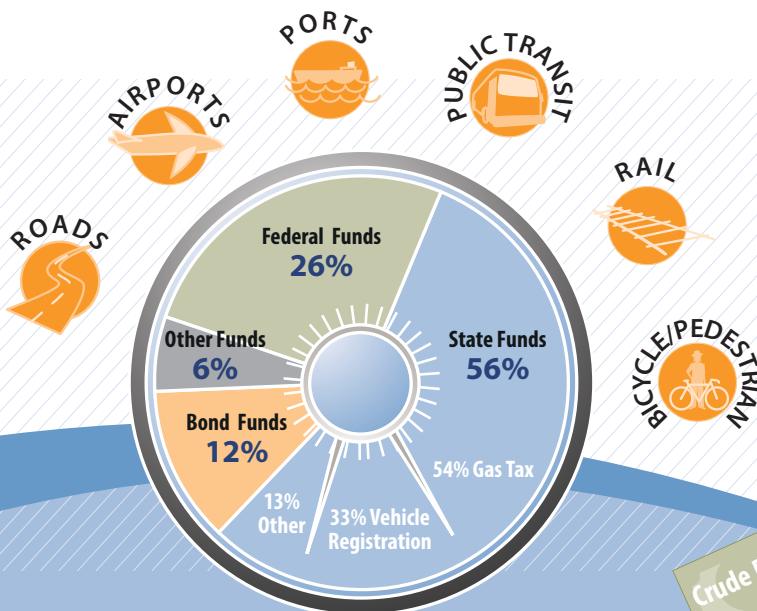
Crude oil

The last
increase to the
state gas tax was in

2006

*Based on \$3.60 per gallon

Price Paid
Gas Tax %



How Wisconsin Funds TRANSPORTATION

State and federal gas taxes are a fixed cost per gallon. When the **price paid at the pump increases**, the **percent of the total price** related to the gas tax **decreases**.



Why does the
price
of gas fluctuate?

Sources and more truths about transportation at
www.tdawisconsin.org

So when every dollar counts,
transportation delivers.



It's how we get there

**wings, rails,
roads or waves**

From the buses in Racine to the Port of Green Bay to the rail lines in Superior to the Waukesha County Airport to the roads we use every day, **Wisconsin's transportation network is the key to connecting goods to market and people to jobs.**

Founded in 1971, the Transportation Development Association of Wisconsin promotes the vitality and safety of the state's transportation system, including public transit systems, public-use and general aviation airports, railroads, commercial ports, and roads. TDA's members comprise business, labor, units of government, regional planning organizations, as well as individuals.



www.tdawisconsin.org and Twitter handle **@TDAWisconsin**