



**TDA**

It's how we get there

## Wisconsin's Transportation System

**104,000 miles** of county highways, town roads, municipal streets



**12,000 miles**

of state and interstate highways



**81** public transit and shared-ride taxi systems

**8**

commercial service airports and



**90**

diverse general aviation (GA) public-use airports



**3,300 miles**

of railroad tracks

**29**



commercial ports

# Transportation Our Future Rides on It

Wisconsin is a diverse state with an economy driven by three transportation-dependent industries—manufacturing, agriculture, and tourism.

Therefore, our economy, and beyond that, the safety and well-being of Wisconsin residents rely on our state's vast interconnected transportation network.

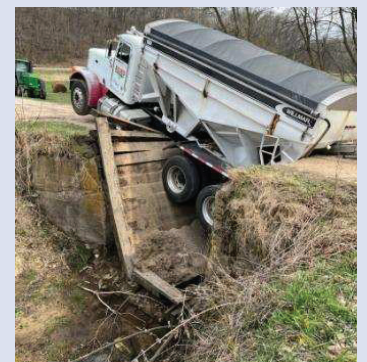
Wisconsin has made some progress in funding transportation in recent years. However, we still have work to do to ensure the state's transportation revenues grow with the economy, evolve with changing technology, and keep up with the needs of an aging system.

The infusion of federal funds from the Infrastructure Investment and Jobs Act has kept Wisconsin's transportation fund afloat during this period of high construction inflation. Still, it will not solve our longtime transportation funding challenges.

### TDA supports:

- The work the Legislature and Governor are doing to fund critical local services and **tie this funding to a source that grows with the economy.** We ask policymakers to apply this understanding of the importance of recurring revenue with natural growth to the well-documented state transportation funding issues and the related backlog of system maintenance, repairs, and improvements.
- An inventory and assessment of bridge-like structures under 20 feet in length.
- Adequate funding to keep the long-delayed I-94 East-West project in Milwaukee moving forward.

In the short term, Wisconsin needs to ensure adequate investment by shoring up existing revenue while considering longer-term solutions for funding the state's critical transportation infrastructure.



### Structure Fails

Last month, a fertilizer tender truck attempted to cross Wet Coulee Creek with disastrous results. A structure under 20 feet in length in the Town of Farmington near La Crosse, estimated to have been constructed nearly 100 years ago, collapsed under a heavy load.

*The Transportation Development Association of Wisconsin is a statewide alliance of hundreds of stakeholders committed to advancing the best in transportation. TDA members include businesses, labor unions, citizen groups, units of government, and individuals. All share one important goal: the development and maintenance of a safe, modern, interconnected transportation network that will support a robust economy and enhance the quality of life for everyone in Wisconsin.*

**TDA** [TDAWisconsin.org](http://TDAWisconsin.org)